

CLUBHOUSE®



CLUBHOUSE®

DECK & RAIL



# Outdoor Living Performance Refined.

*Handsome details and innovative options for beauty and protection along railings and posts.*

*Next-generation engineered polymer decking with limited transferable lifetime performance warranty.*

*Dual-color, dual-embossed boards enable design options from the same board.*

*Deep, rich color infused into each timber with random graining process to mimic nature's genius.*

You Belong Here.

STEP UP TO MEMBERSHIP  
IN A VERY EXCLUSIVE CLUB.  
YOURS.



When you choose a Clubhouse® Deck for your home, you join the next generation of deck owners who have come to pride of ownership through exceptional natural beauty, stunning innovative design and cutting-edge performance.

CLUBHOUSE IS WHERE  
YOU BELONG.



# Imagine Your Place in the Sun.

ENTERTAIN IN LUXURY;  
ESCAPE IN SUPREME COMFORT.

Clubhouse Decking showcases nature in a dramatic departure from ordinary planks and drab details.

*Enjoy.*

Clubhouse® Decking is the first of a new generation of engineered polymer decking that incorporates advanced material science, world-class engineering, and patented performance manufacturing to produce a deck that is stunning in every kind of weather.

YEAR, AFTER YEAR, AFTER YEAR.



**LIMITED TRANSFERABLE LIFETIME  
PERFORMANCE WARRANTY**

for unprecedented peace of mind.

**25-YEAR LIMITED FADE  
& STAIN WARRANTY**

for unsurpassed assurance of beauty,  
year after year.

## Hardwood Collection

Ironwood

Mahogany

Walnut

Ipe

## Earthtone Collection

Brookstone

Cobblestone

Sandstone

Clay

Colors shown are by a lithographic process and may vary from the actual product color.  
Please see your Clubhouse Representative for actual color samples.

INCREDIBLE CHOICE COMES WITH  
INCREDIBLE BEAUTY.

*Naturally.*

There's a secret why Clubhouse® Decking shows so well at parties, get-togethers, and as an icon of neighborhood envy.

It's in the way our deep, rich color is infused into each timber and the exclusive random graining process we created to mimic nature in its organic genius.

And it's also in a special bonus: our unique dual-color, dual-embossed options on every board that allow you to create multiple looks with ease.

# Natural Selection.

### HARDWOOD COLLECTION

Distinctive variegated grains that give your Clubhouse a truly unique, natural wood feel. Our Hardwood Collection is designed with variation in color and patterns to allow for the most realistic replication of true hardwood decking.

### EARTHTONE COLLECTION

Stylish solid shades that offer the look of painted wood without the need for maintenance ... a light cleaning is all that is needed.

A photograph of a wooden deck railing system in a 'Clay' color. The railing features a handrail, a decorative balustrade, and vertical balusters. The background shows a green lawn and trees.

Clubhouse  
*Plus*

Clay

Sandstone

Frame It  
Fabulously.

White

CLUBHOUSE® RAILING FRAMES YOUR  
OUTDOOR ENVIRONMENT. *Perfectly.*

From the steps, to the balcony, to the patio,  
Clubhouse Railing borders on pampered  
comfort and sophisticated protection.

Clubhouse Railing is  
beautifully engineered,  
long-lasting, and backed  
by a limited lifetime warranty  
with 25-year fade and  
stain coverage.

**CLUBHOUSE PLUS RAILING**  
Elegant routed details and a smooth low-gloss  
surface. Clubhouse Plus is available in several  
architectural styles and colors.

Colors shown are by a lithographic process  
and may vary from the actual product color.  
Please see your Clubhouse Representative  
for actual color samples.

# Details that Make the Difference.

INGENUITY THAT  
DOUBLES AS DESIGN. *Sensational.*

The party never stops with our stylish collection of lighting options to perfectly match or accent railings and stairs with true ambiance.

Plus, we provide a remote to allow you to conveniently turn our lights on and off, as well as dim and brighten.



Genesis Step Light  
Black, White and  
Antique Bronze



Berkley Round  
Step Light  
Black, White and  
Antique Bronze



Endurance Ultra  
Thin Down Light  
Black and White  
matte finish



Phoenix Recessed  
Deck Lights  
Purchase complete  
installation kits or  
packs of lights

## THE INGENIOUS CLUBHOUSE® FASTENING SYSTEM

is a hidden secret designed to show off the beauty and elegant lines of premium Clubhouse Decking without any visible means of support.

The system includes the Clubhouse ConnectClip to leave deck surfaces completely unmarred and the seamless Clubhouse Cortex® plug for perimeter areas and stairs.

In addition, the Clubhouse Hidden Fastener Biscuit option acts like a tongue, simultaneously spacing the deck boards and holding them down.

# Innovation at Work, Genius at Play.

When you're a member of the Club, you show your smarts in a deck that will outperform and outlast without losing its beautiful, natural good looks.

Clubhouse has no wood or wood fillers to warp, rot or break down. But it does have a proprietary formulation that produces a super-dense structure that is impervious to water and provides dramatic strength and protection against impact.

And Clubhouse is protected by an ingenious capstock technology that's blended into a single-extrusion process for a stunning low-gloss, natural mat finish that resists oxidation, clouding, fading and staining far beyond outmoded composite or plain PVC decking.

# Performance Defined.

## Superior Strength.



Clubhouse      Brazilian Hardwood



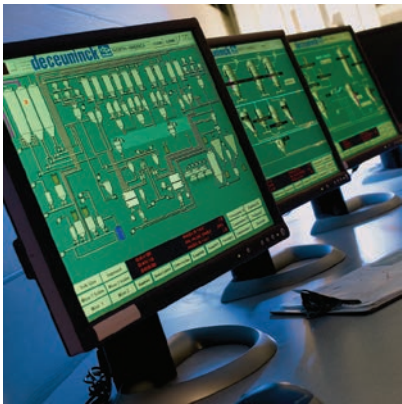
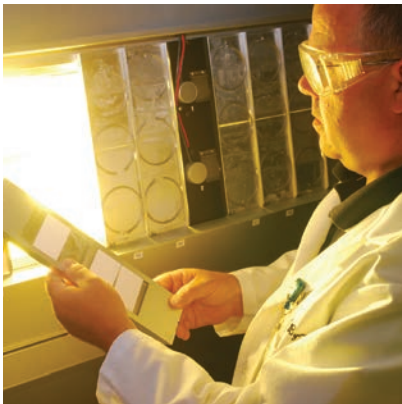
Clubhouse      Competitive Cellular PVC Decking

Laboratory impact tests\* prove that Clubhouse Decking with Korelite technology has better impact resistance.

*\*Laboratory impact test include 2 1/2" 10-pound steel weight dropped from 80".*

## Performance Matrix.

	Composites	Capped Composites	Cellular PVC	Clubhouse Engineered Polymer Decking	Benefit
Preferred look of wood	X	XX	XX	XXX	3 out of 4 Homeowners prefer the look of Clubhouse Decking
Low Moisture Absorption	X	XX	XX	XXX	Rejects mold, mildew and the effects of freeze-thaw cycle due to closed cell construction and no fillers
High Impact Resistance	X	X	X	XXX	Flooring industry tests illustrate the hardness of Clubhouse
Strength Under Foot	XXX	XXX	XX	XXX	More solid underfoot - less bounce. Code approved for wider stair tread applications versus competitive products.
Weatherability	X	XXX	XX	XXX	Based on proprietary Sunshield Technology with proven weather resistance
Environmental Blushing	X	XXX	X	XXX	Resists build up of white spots from standing water that is heated in the sun
Ultra Low Maintenance	XXX	XXX	XXX	XXX	Cleanup is easy with a mild cleaner (common household cleaners) and a soft brush
In Business Over 75 Years	N/A	N/A	N/A	XXX	Over 75 years of industry experience and part of a company that has been extruding polymers since 1960
Engineered in House	N/A	N/A	N/A	XXX	Engineering, Tooling, Material Science and Manufacturing all done in house in the USA
Part of a global manufacturer of Building Products	N/A	N/A	N/A	XXX	Part of The Tapco Group, a global leader in building products



## Exclusive Proprietary Protection.



Clubhouse Decking is made with proprietary Sunshield® technology, the exclusive patented protection that has been tested and proven in the field for more than 30 years.

Sunshield provides an unprecedented barrier against the harsh effects of ultra violet light, driving rain, high humidity and the extremes of heat and cold. And Sunshield offers an added bonus of dimensional stability and impact resistance.

No wonder Sunshield keeps colors looking deep and rich, year after year, on more than six million homes across North America.

*Sunshield is a registered trademark of Deceuninck North America*

## World-Class Material Science.



Korelite™ makes decking lighter, denser and stronger, creating a unique, dense cell structure that minimizes imperfections, voids and water absorption while offering superior strength.

Korelite uses world-class material science, tooling and manufacturing capabilities to create a higher density top and bottom – just like an I-beam. And our high-performance capstock and foam interior act like a stress skin panel.

The result is an exclusive, proprietary technology that looks as good as it performs under foot.



# The Raves Are In.

What do you say when a great deck changes your world view?

You tell the world about Clubhouse®.

Check out our beautiful and informative case studies ... log onto:

[www.ClubhouseDecking.com](http://www.ClubhouseDecking.com)



For more information, call 800-450-7479 or email support at [ClubhouseOrders@tapcoint.com](mailto:ClubhouseOrders@tapcoint.com).

[www.ClubhouseDecking.com](http://www.ClubhouseDecking.com)